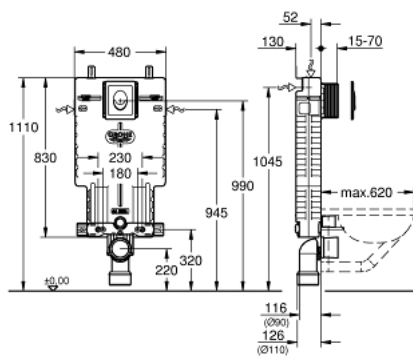


## 38 723 001 UNISSET 2-IN-1 SET FOR WC



### PRODUCT DESCRIPTION

- with flushing cistern GD 2, 6 - 9 l
- consists of:
- Uniset element for WC (38 643 001)
- Skate Air flush plate, chrome, vertical installation (38 505 000)



## 38 723 001 UNISET 2-IN-1 SET FOR WC



### UNITS PER PACKAGE , October 2017 – now

- 1: Threaded bolt (Spare part-nr. 4276400M)
- 2: WC inlet and outlet connecting set (Spare part-nr. 37311K00)
- 2.1: Basin fastening (Spare part-nr. 43511SH0)
- 2.2: Connector (Spare part-nr. 37119000)
- 3: PP-outlet bend Ø 90 mm (Spare part-nr. 42327000)
- 4: 4" Outlet Adaptor F Rapid SI (Spare part-nr. 42242000)
- 5: Support for outlet bend (Spare part-nr. 42243000)
- 6: Inspection shaft (Spare part-nr. 66783000)
- 7: Filling valve (Spare part-nr. 37095000)
- 7.1: Lever (Spare part-nr. 43734000)
- 7.1.1: Ball seal dia. 9x6.8 mm (Spare part-nr. 4377000M)
- 7.2: Valve head (Spare part-nr. 43536000)
- 7.3: Membrane (Spare part-nr. 4375800M)
- 7.4: Screw cap (Spare part-nr. 43735000)
- 7.5: Valve float, 5 pcs. (Spare part-nr. 4379100M)
- 7.6: Repl. kit f. seal (Spare part-nr. 43722000)\*
- 8: Support device (Spare part-nr. 42246000)
- 9: Tube (Spare part-nr. 42233000)
- 9.1: Seat washer (Spare part-nr. 0319100M)
- 10: Dual Flush discharge valve AV1 (Spare part-nr. 42320000)
- 10.1: Extension for overflow pipe (Spare part-nr. 42313000)
- 10.2: pneumatic hose (Spare part-nr. 42319000)
- 10.3: Ball seal dia. 9x6.8 mm (Spare part-nr. 42310000)
- 11: Valve seat for GD2 (Spare part-nr. 42315000)
- 12: Flush plate (Spare part-nr. 38505000)
- 12.1: Screw dia. 4x52 mm (Spare part-nr. 6636200M)
- 12.2: Frame (Spare part-nr. 43207000)
- 12.3: Fixing set (Spare part-nr. 4308500M)\*
- 12.4: Fixing set (Spare part-nr. 4215800M)\*
- 13: Retro-fit set (Spare part-nr. 38796000)\*
- 14: 4,5 l Adapter for GD2 (Spare part-nr. 42333000)\*
- 15: Support feet (Spare part-nr. 37304000)\*
- 16: Retrofit kit for shower toilets Sensia Arena and IGS (Spare part-nr. 40899000)\*

\* Optional accessories