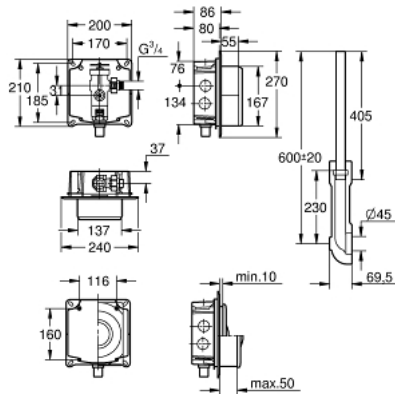


## 37 157 000 **FLUSH VALVE FOR WC**

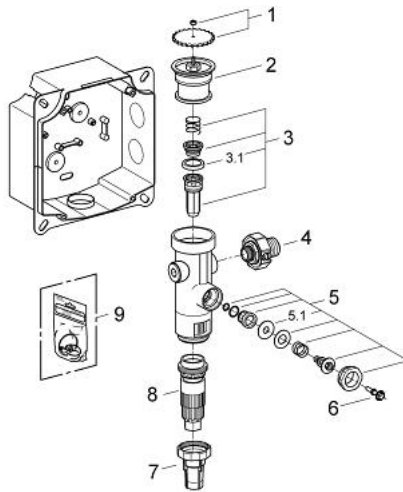


### PRODUCT DESCRIPTION

- concealed installation
- $\frac{3}{4}$ "
- stop valve
- 6 - 14 l adjustable
- for low pressure
- for wash-down and wash-out bowls
- flow pressure range from 0.6 - 3.0 bar (min. static pressure 1.5 bar)
- with flow rate adjustment
- box for concealed installation with flush elbow
- flush pipe adjustable in length
- without wall plate/actuation
- volume needed: 1.6 l/sec



## 37 157 000 FLUSH VALVE FOR WC



### UNITS PER PACKAGE , July 2008 – now

- 1: Hand wheel (Order-nr. 43043000)
  - 2: Cover (Order-nr. 43122000)
  - 3: Piston (Order-nr. 43451000)
  - 3.1: Sleeve (Order-nr. 4376900M)
  - 4: Isolating valve (Order-nr. 43405000)
  - 5: Safety valve (Order-nr. 43422000)
  - 5.1: Membrane (Order-nr. 4377300M)
  - 6: Operating rod (Order-nr. 43067000)
  - 7: Discharge Sleeve (Order-nr. 43326000)
  - 8: Throttle nozzle (Order-nr. 43408000)
  - 9: Repl. kit f. seal (Order-nr. 43012000)\*
- \* Optional accessories