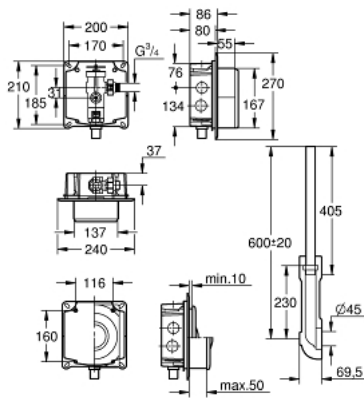


37 153 000 FLUSH VALVE FOR WC



PRODUCT DESCRIPTION

- Colour: chrome
- concealed installation
- $\frac{3}{4}$ "
- stop valve
- 6 - 9 l adjustable
- flow pressure range from 1.2 - 5.0 bar
- with flow rate adjustment
- box for concealed installation with flush elbow
- flush pipe adjustable in length
- without wall plate/actuation
- low noise (group I acc. to German Noise Specification)



37 153 000 FLUSH VALVE FOR WC



UNITS PER PACKAGE , July 2008 – now

- 1: Hand wheel (Spare part-nr. 43043000)
 - 2: Cover (Spare part-nr. 43122000)
 - 3: Piston (Spare part-nr. 43451000)
 - 3.1: Sleeve (Spare part-nr. 4376900M)
 - 4: Isolating valve (Spare part-nr. 43405000)
 - 5: Safety valve (Spare part-nr. 43422000)
 - 5.1: Membrane (Spare part-nr. 4377300M)
 - 6: Operating rod (Spare part-nr. 43067000)
 - 7: Discharge Sleeve (Spare part-nr. 43326000)
 - 8: Throttle nozzle (Spare part-nr. 43407000)
 - 9: Repl. kit f. seal (Spare part-nr. 43012000)*
- * Optional accessories