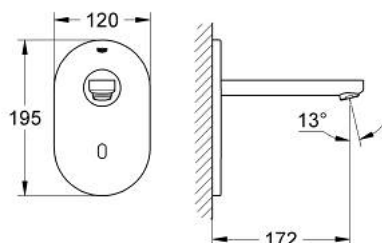


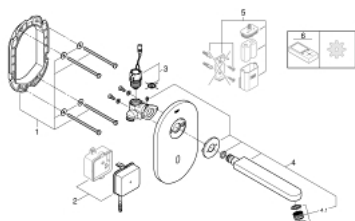
## 36 273 000 EUROECO COSMOPOLITAN E INFRA-RED ELECTRONIC WALL BASIN TAP WITHOUT MIXING DEVICE



### PRODUCT DESCRIPTION

- Colour: chrome
- with infrared sensor for bi-directional communication for monitoring, configuration and servicing
- for cold or premixed water
- with transformer 100-230 V AC, 50-60 Hz, 6 V DC
- maximum flow rate (at 3 bar): 5 l/min
- chrome escutcheon
- chrome spout
- projection 172 mm
- 7 pre-set programs:
  - auto flush
  - thermal disinfection
  - cleaning mode
- additional functions and precise settings by remote control 36 407
- final installation set for concealed fitting box
- 36 336 001/36 337 001
- CE approved
- noise classification 1 in accordance with DIN4109
- minimum pressure 1,0 bar

## 36 273 000 EUROECO COSMOPOLITAN E INFRA-RED ELECTRONIC WALL BASIN TAP WITHOUT MIXING DEVICE



### UNITS PER PACKAGE , May 2018 – now

- 1: Frame (Order-nr. 42419000)
- 2: Switching power supply (Order-nr. 42470000)
- 3: Solenoid valve (Order-nr. 42469000)
- 4: Spout (Order-nr. 42445000)
- 4.1: Mousseur (Order-nr. 48159000)
- 5: Battery housing with battery (Order-nr. 42393000)\*
- 6: Remote control (Order-nr. 36407001)\*

\* Optional accessories