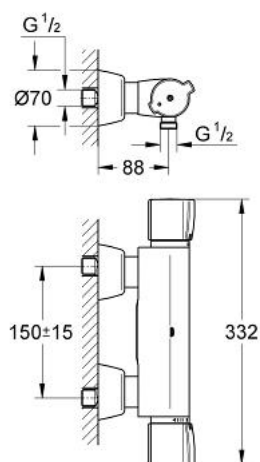


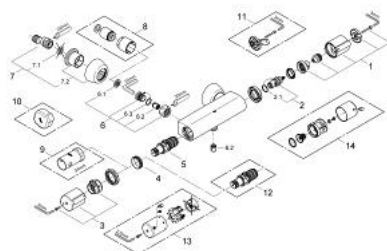
34 205 000 GROHTHERM 2000 SPECIAL THERMOSTAT SHOWER MIXER



PRODUCT DESCRIPTION

- Colour: chrome
- wall mounted
- 100% GROHE CoolTouch consisting of safety housing + S-unions with CoolTouch escutcheons
- wing handles, made from metal
- GROHE TurboStat compact cartridge with wax thermoelement
- integrated mixed water shut off
- ceramic headpart 1/2", 180°
- volume handle with individually adjustable economy stop
- temperature scale handle with pre-adjustable metal safety stop between 35°C and 43°C
- easy thermal disinfection with accessory handle 47 764
- shower outlet below 1/2"
- built-in non return valves
- dirt strainers
- covered S-unions
- Protected against backflow
- GROHE Long-Life finish
- GROHE ErgoPlus
- GROHE SafetyPlus

34 205 000 GROHTHERM 2000 SPECIAL THERMOSTAT SHOWER MIXER



UNITS PER PACKAGE , March 2007 – now

- 1: Handle for shut-off valve (Order-nr. 47732000)
- 2: Ceramic headpart, 1/2" (Order-nr. 45346000)
- 2.1: O-ring $\varnothing 18.2 \times \varnothing 1.7$ (Order-nr. 0392400M)
- 3: Temperature knob with metal end stop (Order-nr. 47733000)
- 4: Fitting ring (Order-nr. 47743000)
- 5: Thermostatic compact cartridge 1/2" (Order-nr. 47439000)
- 6: Non-return valve (Order-nr. 47189000)
- 6.1: Dirt Strainer (Order-nr. 0726400M)
- 6.2: Non-return valve (Order-nr. 08565000)
- 6.3: O-ring $\varnothing 17 \times \varnothing 2$ (Order-nr. 0305500M)
- 7: S-union (Order-nr. 12058000)
- 7.1: Ball seal dia. 9x6.8 mm (Order-nr. 0138600M)
- 7.2: Covering escutcheon (Order-nr. 45545000)
- 8: Extension set 1/2", 30 mm (Order-nr. 46238000)*
- 9: Socket spanner (Order-nr. 19332000)*
- 10: Unlocking handle (Order-nr. 47764000)*
- 11: Handle for disabled use (Order-nr. 47735000)*
- 12: GROHE TurboStat cartridge 1/2" (Order-nr. 47175000)*
- 13: Metal handle temperature control (Order-nr. 47763000)*
- 14: Handle for shut-off valve, metallic (Order-nr. 07749000)*

* Optional accessories