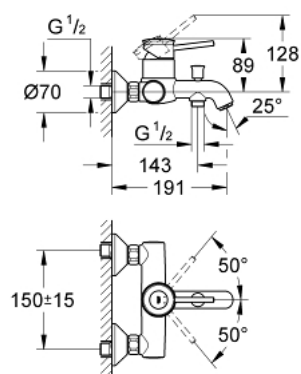


32 865 000 BAUCLASSIC SINGLE-LEVER BATH/SHOWER MIXER



PRODUCT DESCRIPTION

- Colour: chrome
- wall mounted
- metal lever
- GROHE Long-Life 46 mm ceramic cartridge
- GROHE Long-Life finish
- adjustable flow rate limiter
- adjustable minimum flow rate approx. 2.5 l/min
- automatic diverter: bath/shower
- mousseur
- S-unions
- metal wall escutcheon
- S-Union with conical flange as standard equipment
- optional temperature limiter ref. no. 46 308

32 865 000 BAUCLASSIC SINGLE-LEVER BATH/SHOWER MIXER



UNITS PER PACKAGE , September 2009 – now

- 1: Lever (Spare part-nr. 46762000)
 - 2: Shield (Spare part-nr. 46584000)
 - 3: Cartridge (Spare part-nr. 46048000)
 - 4: Diverter knob (Spare part-nr. 65648000)
 - 5: Diverter (Spare part-nr. 65655000)
 - 6: Mousseur (Spare part-nr. 13952000)
 - 7: S-union (Spare part-nr. 12075000)
 - 7.1: Ball seal dia. 9x6.8 mm (Spare part-nr. 0138600M)
 - 7.2: Escutcheon (Spare part-nr. 0221000M)
 - 8: Screw joint (Spare part-nr. 45044000)
 - 9: Extension 3/4", 20 mm (Spare part-nr. 0713000M)*
 - 10: Special spanner (Spare part-nr. 19377000)*
 - 11: Escutcheon (Spare part-nr. 4804900M)*
- * Optional accessories