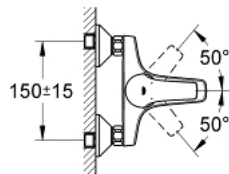
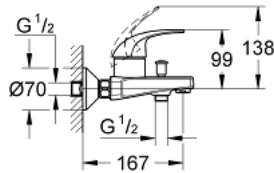


32 806 000 GROHE BAUCURVE SINGLE-LEVER BATH/SHOWER MIXER



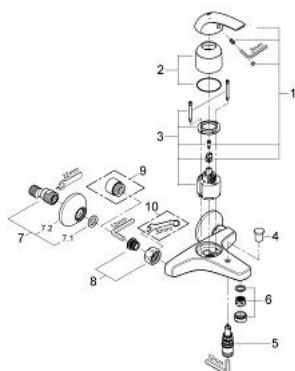
PRODUCT DESCRIPTION

- Colour: chrome
- wall mounted
- metal lever
- GROHE Long-Life 46 mm ceramic cartridge
- GROHE Long-Life finish
- adjustable flow rate limiter
- adjustable minimum flow rate approx. 2.5 l/min
- automatic diverter: bath/shower
- mousseur
- S-unions
- metal wall escutcheon
- optional temperature limiter ref. no. 46 308



32 806 000 GROHE BAUCURVE SINGLE-LEVER BATH/SHOWER MIXER

UNITS PER PACKAGE, August 2009 – now



1: Lever (Spare part-nr. 46700000)

2: Shield (Spare part-nr. 46578000)

3: Cartridge (Spare part-nr. 46048000)

4: Diverter knob (Spare part-nr. 65648000)

5: Diverter (Spare part-nr. 65655000)

6: Mousseur (Spare part-nr. 13952000)

7: S-union (Spare part-nr. 12075000)

8: Screw joint (Spare part-nr. 45044000)

9: Extension 3/4", 20 mm (Spare part-nr. 0713000M)*

10: Special spanner (Spare part-nr. 19377000)*

* Optional accessories