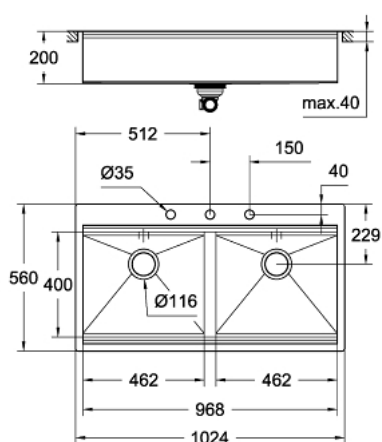


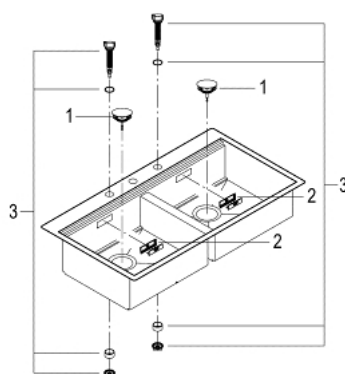
31 585 SD0 K800 STAINLESS STEEL SINK



PRODUCT DESCRIPTION

- Colour: stainless steel
- model: K800 120-S 102.4/56 2.0
- mounting type: flush mount
- material: stainless steel AISI 304 (V2A)
- material thickness: 1 mm
- GROHE Long-Life finish
- finish: satin finish
- GROHE Whisper
- min. cabinet size: 1200 mm
- dimensions: 1024 x 560 mm
- 2 bowl: 462 x 400 x 200 mm
- GROHE FastFixationInstallation system
- drainer: automatic waste fitting
- accessories included: automatic waste fitting with rotary handle, waste kit, basket strainer waste, mounting set
- amount of fasteners included (flush mount): 18
- outer radius: R10, inner bowl radius: R0

31 585 SD0 **K800 STAINLESS STEEL SINK**



UNITS PER PACKAGE , September 2017 – now

1: Plug (Order-nr. 42577SD0)

2: Cover element (Order-nr. 42578SD0)

3: Turning handle (Order-nr. 42573SD0)

4: Plug (Order-nr. 42576SD0)