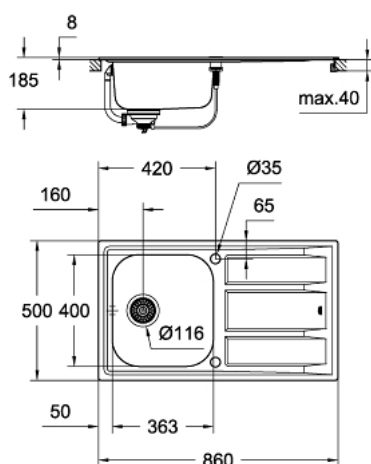


## 31 566 SD0 K400 STAINLESS STEEL SINK WITH DRAINER



### PRODUCT DESCRIPTION

- Colour: stainless steel
- model: K400 45-S 86/50 1.0 rev
- mounting type: top mount
- material: stainless steel AISI 304 (V2A)
- material thickness: 0.7 mm
- GROHE Long-Life finish
- finish: satin finish
- GROHE Whisper
- min. cabinet size: 450 mm
- dimensions: 860 x 500 mm
- 1 bowl: 362.5 x 400 x 188 mm
- outer radius: R10, inner bowl radius: R95
- GROHE FastFixation rapid installation system
- sink mountable left or right
- cut-out: 840 x 480 mm
- drilling holes: 2 x 35 mm
- drainer: automatic waste fitting
- accessories included: automatic waste fitting with rotary handle, waste kit, basket strainer waste, mounting set
- optional push to open excenter (40 986 SD0)
- amount of fasteners included (top mount): 6

## 31 566 SD0 **K400 STAINLESS STEEL SINK WITH DRAINER**

**UNITS PER PACKAGE** , September 2017 – now

1: Plug (Spare part-nr. 42576SD0)

2: Turning handle (Spare part-nr. 42575SD0)

