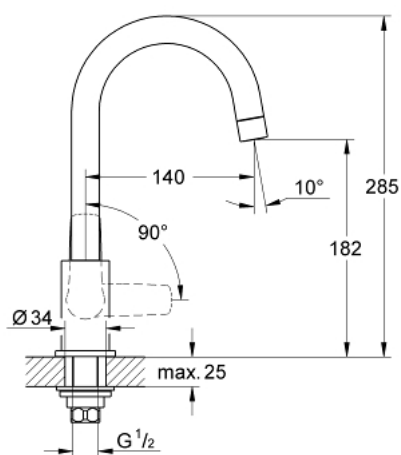


31 221 000 **GROHE BAUCURVE SINK TAP 1/2"**

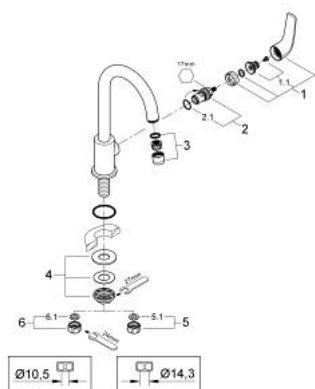


PRODUCT DESCRIPTION

- Colour: chrome
- single hole installation
- metal lever
- ceramic headpart
- swivelling tubular spout
- mousseur
- GROHE Long-Life finish
- fixation nut



31 221 000 GROHE BAUCURVE SINK TAP 1/2"



UNITS PER PACKAGE , June 2010 – now

- 1: Handle (Spare part-nr. 48120000)
- 1.1: Replacement handle connection kit (Spare part-nr. 45186000)
 - 1.1.1: O-ring $\varnothing 18.2 \times \varnothing 1.7$ (Spare part-nr. 0392400M)
- 2: Ceramic headpart, 1/2" (Spare part-nr. 45882000)
 - 2.1: O-ring $\varnothing 18.2 \times \varnothing 1.7$ (Spare part-nr. 0392400M)
- 3: Mousseur (Spare part-nr. 13928000)
- 4: Shank mounting kit (Spare part-nr. 45004000)
- 5: Coupling nut 1/2" x 14.5 mm (Spare part-nr. 1290200M)
 - 5.1: Fibre seal dia. 12x2 mm (Spare part-nr. 0138900M)
- 6: Coupling nut 1/2" x 10.5 mm (Spare part-nr. 1290100M)
 - 6.1: Fibre seal dia. 12x2 mm (Spare part-nr. 0138900M)