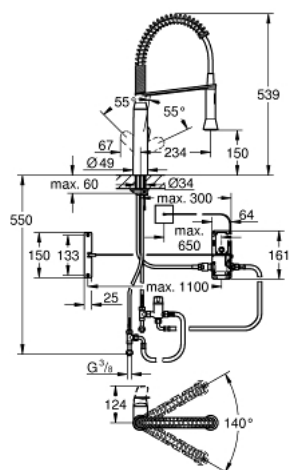


## 30 312 000 K7 FOOT CONTROL ELECTRONIC SINGLE-LEVER SINK MIXER 1/2"

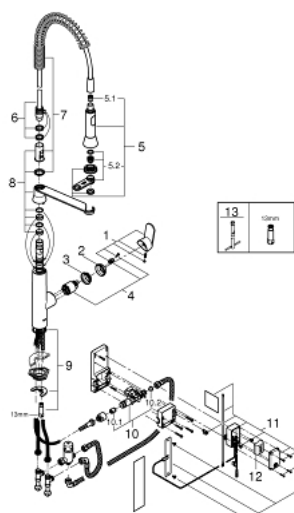


### PRODUCT DESCRIPTION

- Colour: chrome
- medium spout
- Foot control: activation of water via contact with sensor
- battery power supply 6 V, lithium-battery, type CR-P2
- CE approved
- solenoid valve
- fixed value mixing valve
- automatic safety stop 60 sec. (factory pre-set)
- type of protection IP 44
- GROHE SilkMove 35 mm ceramic cartridge
- professional spray
- diverter: mousseur/shower jet
- automatic reverse to mousseur
- adjustable flow rate limiter
- swivelling tubular spout
- selectable swivel area : 0° / 150° / 360°
- Protected against backflow
- flexible connection hoses
- rapid-installation-system



## 30 312 000 K7 FOOT CONTROL ELECTRONIC SINGLE-LEVER SINK MIXER 1/2"



### UNITS PER PACKAGE , July 2015 – now

- 1: Lever (Spare part-nr. 46927000)
  - 2: Shield (Spare part-nr. 46116000)
  - 3: Screw coupling (Spare part-nr. 46460000)
  - 4: Cartridge (Spare part-nr. 46374000)
  - 5: Hand shower (Spare part-nr. 46731000)
  - 5.1: Non-return valve (Spare part-nr. 08565000)
  - 5.2: Mousseur (Spare part-nr. 46711000)
  - 6: Shower hose (Spare part-nr. 46871000)
  - 7: Spring (Spare part-nr. 46873SD0)
  - 8: Holder pull out spray (Spare part-nr. 46734000)
  - 9: Shank mounting kit (Spare part-nr. 46671000)
  - 10: Solenoid valve (Spare part-nr. 48213000)
  - 10.1: Non-return valve (Spare part-nr. 08565000)
  - 10.2: Dirt strainer (Spare part-nr. 42395000)
  - 11: Control unit (Spare part-nr. 48304000)
  - 12: Battery (Spare part-nr. 42886000)
  - 13: Mounting wrench (Spare part-nr. 19017000)\*
- \* Optional accessories