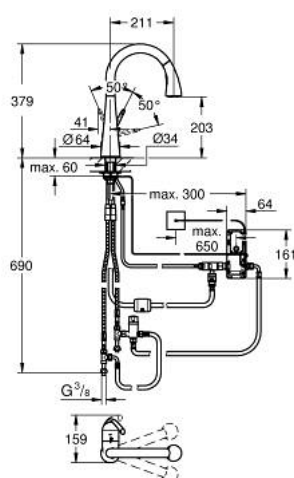


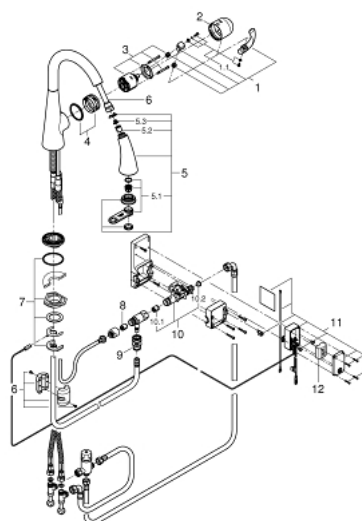
## 30 219 DC1 ZEDRA TOUCH ELECTRONIC SINGLE-LEVER SINK MIXER 1/2"



### PRODUCT DESCRIPTION

- Colour: Supersteel
- Touch: activation of water via skin contact
- battery power supply 6 V, lithium-battery, type CR-P2
- CE approved
- solenoid valve
- fixed value mixing valve
- automatic safety stop 60 sec.(factory pre-set)
- type of protection IP 44
- GROHE SilkMove 46 mm ceramic cartridge
- Lead and Nickel Free Inner Water Ways
- pull-out dual spray - switches back and forth between regular flow and spray
- diverter: mousseur/shower jet
- automatic reverse to mousseur
- adjustable flow rate limiter
- swivelling tubular spout
- selectable swivel area : 0° / 150° / 360°
- Protected against backflow
- flexible connection hoses
- rapid-installation-system

## 30 219 DC1 ZEDRA TOUCH ELECTRONIC SINGLE-LEVER SINK MIXER 1/2"



### UNITS PER PACKAGE , May 2015 – now

- 1: Lever (Order-nr. 46654DC0)
- 1.1: Fixing set (Order-nr. 46310000)
- 2: Shield (Order-nr. 46655DC0)
- 3: Cartridge (Order-nr. 46048000)
- 4: guide and slide ring (Order-nr. 46632V00)
- 5: Hand shower (Order-nr. 46875ND0)
- 5.1: Mousseur (Order-nr. 46711000)
- 5.2: Non-return valve (Order-nr. 08565000)
- 5.3: Dirt strainer (Order-nr. 0676800M)
- 6: Shower hose (Order-nr. 48293000)
- 7: Shank mounting kit (Order-nr. 46345000)
- 8: Non-return valve (Order-nr. 08565000)
- 9: Snap coupling (Order-nr. 46338000)
- 10: Solenoid valve (Order-nr. 48213000)
- 10.1: Non-return valve (Order-nr. 08565000)
- 10.2: Dirt strainer (Order-nr. 42395000)
- 11: Control unit (Order-nr. 48214000)
- 12: Battery (Order-nr. 42886000)