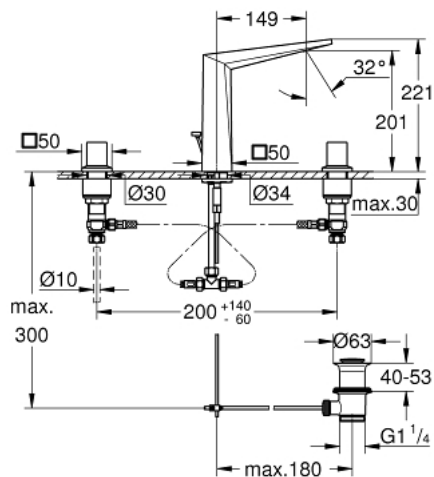


20 344 000 ALLURE BRILLIANT 3-HOLE BASIN MIXER M-SIZE



PRODUCT DESCRIPTION

- Colour: chrome
- ceramic headparts 1/2", 90°
- GROHE Long-Life finish
- GROHE Water Saving 5.0 l/min flow limiter
- projection 161 mm
- pop-up waste set 1 1/4"
- pressure-proof, flexible connection hoses between spout and side valves
- minimum pressure 1,0 bar



20 344 000 ALLURE BRILLIANT 3-HOLE BASIN MIXER M-SIZE



UNITS PER PACKAGE , August 2010 – now

- 1: Allure Brilliant handle red (Order-nr. 48129000)
- 2: Allure Brilliant handle blue (Order-nr. 48130000)
- 3: Ceramic headpart, 1/2" (Order-nr. 45882000)
- 3.1: O-ring $\varnothing 18.2 \times \varnothing 1.7$ (Order-nr. 0392400M)
- 4: Ceramic headpart, 1/2" (Order-nr. 45883000)
- 4.1: O-ring $\varnothing 18.2 \times \varnothing 1.7$ (Order-nr. 0392400M)
- 5: Pop-up rod (Order-nr. 46787000)
- 6: Race (Order-nr. 46794000)
- 7: Flow limiter (Order-nr. 48160000)
- 8: Shank mounting kit (Order-nr. 46671000)
- 9: Compression union 3/8" (Order-nr. 12914000)
- 10: Pop-up waste set 1 1/4" (Order-nr. 28910000)
- 10.1: Plug (Order-nr. 07182000)
- 10.2: Eccentric rod (Order-nr. 07052000)
- 11: Coupling nut 1/2" x 10.5 mm (Order-nr. 1290100M)
- 11.1: Fibre seal dia. 12x2 mm (Order-nr. 0138900M)
- 12: Flexible connection hose (Order-nr. 45704000)
- 13: Mounting wrench (Order-nr. 19017000)*
- 14: Eccentric rod (Order-nr. 07341000)*

* Optional accessories