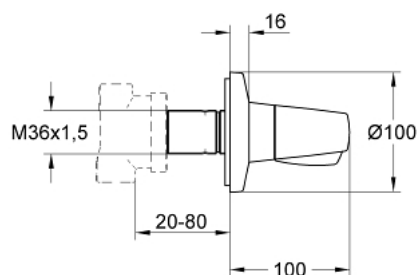


19 906 000 **CHIARA <P>2-WAY DIVERTER</P>**

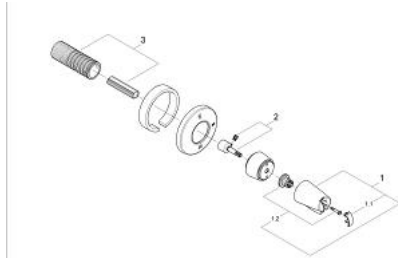


PRODUCT DESCRIPTION

- Colour: chrome
- final installation set for 29 706 000
- without concealed body
- screw flange
- installation depth adjustable
- from 20-80 mm
- with handle
- GROHE Long-Life finish



19 906 000 **CHIARA <P>2-WAY DIVERTER</P>**



UNITS PER PACKAGE , January 2002 – now

1: Handle (Order-nr. 45954IP0)

1.1: Cap (Order-nr. 11366P0M)

1.2: Replacement handle connection kit (Order-nr. 45186000)

1.2.1: O-ring $\varnothing 18.2 \times \varnothing 1.7$ (Order-nr. 0392400M)

2: Extension (Order-nr. 45611000)

3: Extension (Order-nr. 45439000)