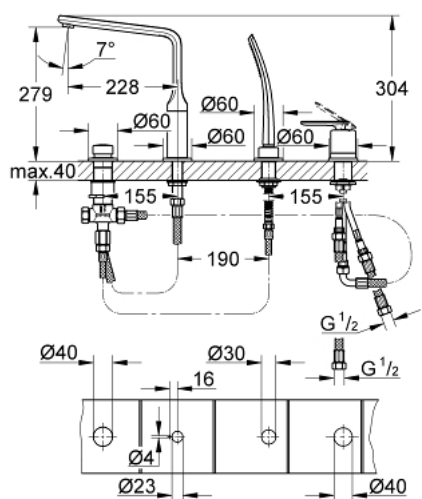


19 373 000 VERIS 4-HOLE SINGLE LEVER BATH COMBINATION



PRODUCT DESCRIPTION

- Colour: chrome
- GROHE SilkMove 46 mm ceramic cartridge
- GROHE Long-Life finish
- consists of:
- pre-assembled spout fixing
- single lever mixer operating element
- bath spout with Mousseur
- automatic diverter: bath/shower
- hand shower 27 184 000
- metal shower hose 2000 mm
- mounting plate
- flexible connection hoses
- connection for shower hose
- Protected against backflow
- minimum pressure 1,0 bar

19 373 000 VERIS 4-HOLE SINGLE LEVER BATH COMBINATION



UNITS PER PACKAGE , October 2008 – now

- 1: Lever (Order-nr. 46667000)
- 1.1: Cap (Order-nr. 46672000)
- 2: Shield (Order-nr. 46666000)
- 3: Shield (Order-nr. 46665000)
- 4: Cartridge (Order-nr. 46048000)
- 5: Shank fastening assembly M36x1,5 (Order-nr. 45164000)
- 6: Tube (Order-nr. 07227000)
- 7: Dirt strainer (Order-nr. 0700200M)
- 8: Cone nut (Order-nr. 08864000)
- 9: Diverter knob (Order-nr. 45997000)
- 10: Diverter (Order-nr. 45443000)
- 10.1: O-ring $\varnothing 6 \times \varnothing 2$ (Order-nr. 0128300M)
- 10.2: Seat washer (Order-nr. 0120500M)
- 11: Repl.kit f.shank fastening 3/4" (Order-nr. 45444000)
- 12: Non-return valve (Order-nr. 08565000)
- 13: Tube (Order-nr. 07300000)
- 14: Spout (Order-nr. 13250000)
- 14.1: Set of screws (Order-nr. 46670000)
- 14.2: Sealing washer (Order-nr. 0128500M)
- 14.3: Mousseur (Order-nr. 13922000)
- 15: Tube (Order-nr. 48018000)
- 16: Tube (Order-nr. 48017000)
- 17: Metal hose (Order-nr. 28146000)
- 17: Compression spring (Order-nr. 00869000)